

PERENNIALS





## Aster novae-angliae

*New England Aster*

**Pink Crush** - This spectacular large, round, mounded perennial is covered with masses of pink flowers. Ideal for rain gardens, borders, containers, and mass planting. 'Pink Crush' will show its color later in the summer than most Aster's and will attract butterflies and support bees. They are also salt tolerant, thrive in the sun, and look just as good in your house as cut flowers as they do in the garden.

- Hardiness Zone: 3-8
- Height: 20-24 in
- Spread: 34-38 in
- **Full Sun**

## Astilbe

### **Montgomery Astilbe**

Many people think there is no better red flowering Astilbe that 'Fanal' but we think that 'Montgomery' is far superior. Its deep red flower color in early June is richer and more vibrant than 'Fanal' but that's only the start of what makes this plant stand out. Its foliage is incredible! It emerges from the ground bronzy red in the early spring and, even as it matures to a deep, lustrous green as the spring progresses, it retains an infusion of red color that makes it jump at you from the landscape and enhances its red flower color. It's a perfect plant for partial shade and moist, well-drained soil and is a knockout when planted in groups. Watch for even more color as the hummingbirds make a bee-line to the open flowers!

- Hardiness Zone: 3-8
- Height: 16-20 Inches
- Spread: 20-24 Inches
- **Partial Sun/Full Shade**

### **Peach Blossom Astilbe**

Everyone knows Astilbes are the definitive perennials for the shade or woodland garden and this selection is one of the best at filling this niche with color and low maintenance beauty. It's a sure thing, being deer and rabbit resistant, and butterflies love it for its soft, peachy-pink, airy plumes of bloom that rise above the rich fern-like foliage starting in late May or early June. 'Peach Blossom' is one of the most drought-tolerant selections of the genus and it will flower into early July for an extended show you'll look forward to every year. 'Peach Blossom' will tolerate morning sun but make sure it has enough shade so that it dependably lights up a darker area of your landscape.

- Hardiness Zone: 4-8
- Height: 18-24 Inches
- Spread: 18-24 Inches
- **Partial Sun/Full Shade**



ASTER PINK CRUSH



ASTILBE MONTGOMERY



ASTILBE PEACH BLOSSOM





FANAL ASTILBE

## Astilbe ardensii

### **Fanal Astilbe**

'Fanal' adds some color to the shaded landscape with red foliage in the spring that transitions to green for the summer months and that's just the foliage. The deep red flowers top the lacy green foliage in the hot summer months. A great selection for the shaded garden especially useful in woodland areas or where deer browse is a concern since deer and rabbits tend to leave Astilbe's alone. Thrives even in the darkest shade.

- Hardiness Zone: 3-8
- Height: 18-24 Inches
- Spread: 18-28 Inches
- **Partial Sun/Full Shade**

## Astilbe chinensis

### **Purple Candles Astilbe**

Drought tolerant perennial with purplish red flower spikes above bronzed foliage. Ideal for borders, woodland gardens or mass plantings. Excellent cut flowers.

- Hardiness Zone: 3-8
- Height: 3-4 Feet
- Spread: 2-3 Feet
- **Partial Sun/Full Shade**

### **Visions Chinese Astilbe**

Broad leaves with deep cuts are what make this variety different from the others. Not to mention the incredibly bright lilac-purple flowers that bloom all summer. A shorter, more compact form allows for 'Visions' to be planted anywhere you have a shady gap to fill. Blooms July-August.

- Hardiness Zone: 3-8
- Height: 15-24 Inches
- Spread: 24-30 Inches
- **Partial Sun/Full Shade**



PURPLE CANDLES ASTILBE



VISIONS CHINESE ASTILBE

## Astilbe japonica

### **Deutschland Astilbe**

'Deutschland' Astilbe starts the spring with a mound of bronzy, deep green foliage. This deeply cut foliage provides great texture for any shady area spring through fall and provides a stunning backdrop for creamy white plumes that rise above the foliage and open in late June attracting nectar seeking hummingbirds and butterflies. 'Deutschland' thrives in moist, shady locations and is popular for border plantings or alongside water areas. Its magnificent blooms are superb for both fresh or dried flower arrangements while its dark foliage blends seamlessly with small to medium size gold-leaved hostas or ferns. Plant this deer, rabbit, slug and rodent resistant beauty in groups for maximum impact. In order to keep Astilbe looking good for the next year, do not cut it back in the winter, (the old foliage helps protect the plant from winter damage), but prune in early spring.

- Hardiness Zone: 3-8
- Height: 3-4 Feet
- Spread: 2-3 Feet
- **Partial Sun/Full Shade**



DEUTSCHLAND ASTILBE



### ***Rheinland Astilbe***

This early blooming beauty will captivate you with mounding, deeply cut, lustrous, dark green foliage and an ample display of airy, pale pink flower spikes starting in mid to late May and continuing into late June.

- Hardiness Zone: 3-8
- Height: 24-30 Inches
- Spread: 24-30 Inches
- ***Partial Sun/Full Shade***

## **Centaurea**

### ***Amethyst Dream Bachelors Button***

Looking for a plant that can tolerate it hot and dry and still look great? 'Amethyst Dream' does that and more. This compact beauty starts to bloom in mid May with brilliant purple flowers, the deepest and darkest purple available in this genus. Resembling the annual Bachelor Button in size, this delightful bloom can reach an amazing 2 ½" wide. They are long lasting and excellent for cutting or drying and the plants are virtually carefree in the garden. Pair with 'Amethyst in Snow', the other stunning bi-colored Blooms Centaurea, for a picture perfect combo. 'Amethyst Dream' is drought resistant and great for a sunny perennial garden... even the soft, silvery green foliage will look great in the garden after the blooms cease in early summer!

- Hardiness Zone: 3-8
- Height: 18-24 Inches
- Spread: 24-28 Inches
- ***Full Sun***

### ***Amethyst in Snow Bachelors Button***

Bachelor's Buttons have always been one of the most dependable growers in the garden but not really one of its most exciting plants. 'Amethyst in Snow' is about to change all of that with a bi-color flower that is revolutionary for this genus. Long, deep green leaves with a haze of silver emerge in spring to create a thick, spreading, very attractive mound in the garden. Big buds that almost look like pineapples emerge in June at the top of each leaf carrying stem, opening in late June to reveal pure white petals that look like feathered trumpets arranged around a royal purple flower center. The color is superb, especially backed by the deep green foliage and flowers continue to bloom into August. 'Amethyst in Snow' thrives in full sun or partial shade and, once established, is very drought resistant.

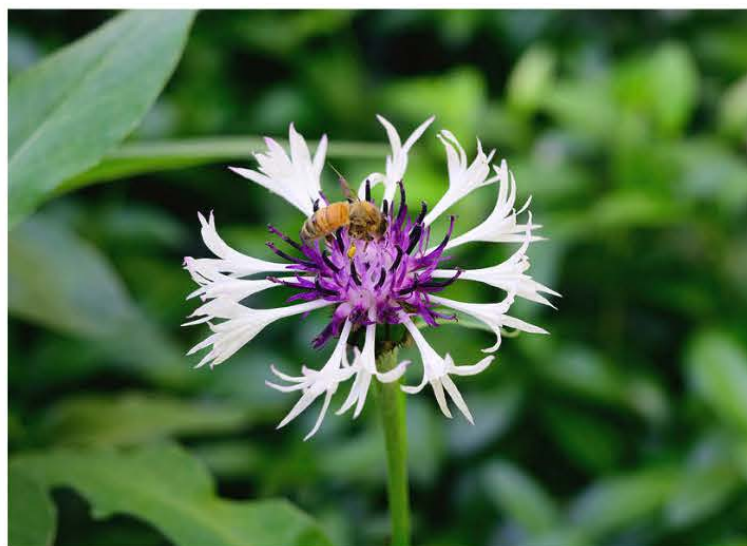
- Hardiness Zone: 3-8
- Height: 12-15 Inches
- Spread: 24-30 Inches
- ***Full Sun***



RHEINLAND ASTILBE



AMETHYST DREAM BACHELORS BUTTON



AMETHYST IN SNOW BACHELORS BUTTON





GISELLE CLEMATIS



NUBIA CLEMATIS



STAND BY ME BUSH CLEMATIS



SWEET AUTUMN CLEMATIS

## Clematis

### ***Giselle Clematis***

One of the latest clematis to come from the Evison & Poulsen breeding programme and launched at the 2013 Chelsea Flower Show. Stunningly multi-flowered, an extremely free-flowering plant that makes a great addition to those clematis that can be grown with roses at the base of an archway or pergola, or even free-standing roses in a border. Also ideal for growing in a container on an obelisk for the deck garden, patio or outdoor dining area. Looks tremendous when grown in association with purple foliaged shrubs.

- Hardiness Zone: 4-9
- Height: 4-5 Feet
- Spread: 3-4 Feet
- **Full Sun**

### ***Nubia Clematis***

Vigorous but dense and compact, it is hard not to be impressed by this heavy blooming beauty that features big, dark red flowers that nearly cover the plant starting in late spring. With its repeat blooming, long season of dark red color and its form that makes it a dream for small spaces or containers, it's no wonder that you will fall in love with Nubia!

- Hardiness Zone: 4-8
- Height: 3-4 Feet
- Spread: 2-3 Feet
- **Partial Sun/Full Shade**

## Clematis hybrid

### ***Stand by Me Bush Clematis***

A non-vining herbaceous Clematis that dies back to the ground at the end of the growing season. Blue bell-shaped flowers. Benefits from staking, cages or neighboring plants for support.

- Hardiness Zone: 3-7
- Height: 34-38 Inches
- Spread: 24-36 Inches
- **Partial Sun/Full Sun**

## Clematis paniculata

### ***Sweet Autumn Clematis***

Save the best for last. Flowering later than other varieties, paniculata goes into bloom in September and continues through October. Tiny 1" blooms cover the plant, and carry a light fragrance. Easy to maintain, it can be evergreen in milder climates. Class 3.

- Hardiness Zone: 3-8
- **Full Sun**



## Coreopsis verticillata

### *Threadleaf Tickseed*

You may know 'Moonbeam' and 'Zagreb' as the most popular forms of this plant but the original species is still the best for wildlife habitat in your backyard, and puts on an amazing show to boot! Vigorous and somewhat upright, this selection forms a tight bush with fine textured, needle-like foliage that tops itself with countless buds in late spring. These flower buds open in late June revealing single yellow daisy blooms by the boatload, continuing into August. It's such an easy to grow, easy care plant that once it's established you need do nothing but enjoy the show, especially the hoards of butterflies that will be drawn to the bloom like steel to a magnet. Plant this selection in full sun and give it well-drained soil, then stand back and watch the summer show.

- Hardiness Zone: 3-8
- Height: 18-24 Inches
- Spread: 2-3 Feet
- **Full Sun**



THREADLEAF TICKSEED

### *Moonbeam Threadleaf Tickseed*

This 1992 perennial plant of the year still packs a summer garden punch that few plants can equal! Pale yellow daisy flowers seem to float above delicate, needlelike foliage nearly all summer long and even into the fall once they start blooming in early July. Few perennials can match the reblooming power of 'Moonbeam' as loads of buds rise above spent flowers to keep adding color to the garden. 'Moonbeam' is drought tolerant and deer resistant and its ability to fill in around other sun loving perennials with its thin, non-shading foliage makes this easy to grow selection a perfect companion plant in the garden. For a powerful statement, group 'Moonbeam' in the middle of any sunny, well drained planting area and watch the summer fireworks!

- Hardiness Zone: 3-8
- Height: 12-18 Inches
- Spread: 24-30 Inches
- **Full Sun**



MOONBEAM THREADLEAF TICKSEED

## Delphinium

### *Red Lark Larkspur*

This plant will stop you in your tracks with spikes of coral red double flowers rising above a mound of scalloped foliage in late spring and summer. These blooms are a color breakthrough for Delphinium and will put a charge into any garden!

- Hardiness Zone: 3-8
- Height: 24-36 Inches
- Spread: 15-18 Inches
- **Full Sun**



RED LARK LARKSPUR





BLUE GUARDIAN LARKSPUR

### ***Blue Guardian Larkspur***

Finally, a breakthrough in Delphinium breeding that clearly stands above the rest! 'Guardian Blue' bursts into bloom with extreme uniformity and weeks ahead of other open pollinated Delphiniums. Don't be fooled by the dainty appearance of the stems since these thinner, yet stronger stems tolerate handling and tougher garden conditions with much less stem breakage and support than other Delphiniums. 'Guardian Blue' will fill your garden with stately spires of double, deep blue blooms from late May through early July. They'll look great towards the rear of the perennial garden and will be excellent cut flowers for your home. This breakthrough plant performs best when provided full to partial sun and moist, well-drained soil.

- Hardiness Zone: 4-8
- Height: 30-40 Inches
- Spread: 24-36 Inches
- **Partial Sun/Full Sun**



BLACK EYED ANGELS HYBRID BEE DELPHINIUM

### **Delphinium New Millennium**

#### ***Black Eyed Angels Hybrid Bee Delphinium***

A classic garden perennial is improved upon with beautiful white blossoms that each have their own black eye in the center of each flower. Butterflies and hummingbirds flock to the large flowers. You will want to bring some stalks inside as they make excellent cut-flower bouquets. These hybrid Delphiniums are bred for strong stems to hold up the enormous flowers, excellent form, and when other Delphiniums succumb to heat or humidity these keep producing all while showing excellent cold hardiness.

- Hardiness Zone: 3-9
- Height: 3-5 ft
- Spread: 18-24 in
- **Full Sun**

### **Dianthus**

#### ***Firewitch Cheddar Pinks***

Dreamy is the word that will come to mind when you catch a glimpse of this trailing, floriferous plant in bloom. Of course, even when it's out of bloom it's noteworthy with long, narrow, baby-blue foliage that forms a dense mat that can light up a sunny garden on its own. But, this striking foliage combined with a wave of deep violet pink single carnations that sit above the foliage from late May through June is simply electrifying! Plant it en masse in a well-drained soil spot or even in a container garden and enjoy the spectacle

- Hardiness Zone: 3-8
- Height: 3-6 Inches
- Spread: 18-24 Inches
- **Full Sun**



FIREWITCH CHEDDAR PINKS



## Dianthus hybrid Fruit Punch

### ***Cranberry Cocktail Pinks***

This colorful perennial produces carnation-like, double, hot magenta pink flowers atop a low mound of grey-green foliage. Use it to edge sunny borders and pathways.

- Hardiness Zone: 4 - 9
- Height: 8-10 Inches
- Spread: 12-14 Inches
- Spacing: 12-14 in
- ***Partial Sun/Full Sun***

### ***Maraschino Pinks***

This colorful perennial produces fragrant, double, hot cherry red blossoms atop a low mound of silvery blue, spiky foliage. Use it to edge sunny borders and pathways.

- Hardiness Zone: 4 - 9
- Height: 9-11 Inches
- Spread: 12-14 Inches
- Spacing: 12-14 in
- ***Partial Sun/Full Sun***

### ***Raspberry Ruffles Pinks***

This colorful perennial produces large, double, raspberry pink flowers with razor thin white edges atop a polished, upright mound of blue-green foliage. Use it to edge sunny borders and pathways.

- Hardiness Zone: 4-9
- Height: 10-12 Inches
- Spread: 12-14 Inches
- Spacing: 12-14 in
- ***Partial Sun/Full Sun***

## Dianthus PRETTY POPPERS

### ***Appleblossom Burst Pinks***

Clouds of showy red, pink and white flowers top this spreading mound of blue-green foliage putting on an unforgettable show from mid-spring through early summer. So floriferous that every pollinator in the neighborhood will take notice, 'Appleblossom' puts on quite a show when massed in the landscape and is a blooming fool in any mixed perennial container!

- Hardiness Zone: 4-9
- Height: 8-10 in
- Spread: 16-20 in
- ***Partial Sun/Full Sun***

### ***Double Bubble Pinks***

Clouds of showy double pink flowers top this tight, rounded mound of blue-green foliage putting on an unforgettable show from mid spring through early summer. So floriferous that every pollinator in the neighborhood will take notice, 'Double Bubble' puts on quite a show when massed in the landscape and is a blooming fool in any mixed perennial container!

- Hardiness Zone: 4-8
- Height: 6-8 Inches
- Spread: 6-8 Inches
- ***Partial Sun/Full Sun***



DIANTHUS CRANBERRY COCKTAIL PINKS



DIANTHUS MARASCHINO PINKS



DIANTHUS RASPBERRY RUFFLES PINKS



DIANTHUS APPLEBLOSSOM BURST PINKS



DIANTHUS DOUBLE BUBBLE PINKS





CARILLION FOXGLOVE

## Digitalis grandiflora

### ***Carillion Foxglove***

Vigorous growing with large, mound forming foliage, this plant gives rise to long spikes covered with fat buds that open to reveal spikes of tubular, creamy yellow flowers starting in June. Spectacular summer bloom for the back of any garden. Good cut flower. Great for grouping. Easy to grow.

- Hardiness Zone: 4-8
- Height: 12-15 Inches
- Spread: 10-12 Inches
- **Partial Sun**

## Digitalis mertonensis

### ***Strawberry Foxglove***

Magnificent is the word that will come to mind when you see the huge, pink flowers spotted darker on tall spikes starting in early to mid-June and continuing on through July. Big, beefy foliage forms a mound underneath this massive flower display giving you a plant package that begs to be grouped and admired at the rear of any semi-shady perennial border.

- Hardiness Zone: 4-8
- Height: 3-4 Feet
- Spread: 18-24 Inches
- **Partial Sun**



STRAWBERRY FOXGLOVE

## Digitalis purpurea

### ***Camelot Lavender Foxglove***

Any digitalis can be breathtaking but 'Camelot Lavender' is part of a new generation of Digitalis that has so many garden advantages that it may make all other selections obsolete. The Camelot series features plants that display great uniformity in the garden with consistent, spectacular flowering in the first and second season in the garden, something that can be hit or miss in other selections. Deep green, heavily corrugated foliage emerges in the spring to form a basal mound from which a flower stalk rises starting in late May. Buds and open in June to reveal tubular, deep lavender individual flowers with speckled throats. What makes these flowers even more spectacular is that, unlike most other Digitalis, the flowers are held horizontal on the stalk making for spectacular viewing. You'll love the show as will the local hummingbirds and it is a perfect plant for livening up a partial shade garden with show stopping color through the end of July.

- Hardiness Zone: 4-8
- Height: 36-48 Inches
- Spread: 18-24 Inches
- **Partial Sun**



CAMELOT LAVENDER FOXGLOVE



### ***Dalmatian Peach Foxglove***

Talk about a spring and summer thriller, this selection's basal mound thick, large green leaves gives rise to strong, tall flower stalks bearing beefy buds in early June. The flowers open to form a massive column of light peachy colored flowers each with darker peach spotted throats. These magnificent spikes are perfect for cutting and the plants are perfect grouped for display in the back of any sunny to partial shade garden.

- Hardiness Zone: 4-8
- Height: 36-42 Inches
- Spread: 12-18 Inches
- ***Partial Sun/Full Sun***

### ***Dalmatian Purple Foxglove***

Get ready to be dazzled by this stunning perennial Foxglove that blooms early and often and won't keep you waiting forever for bloom like some other perennial Foxgloves can. Large, thick, almost felt-like oblong leaves form a fat basal mound of foliage by mid spring. Arising from this mound in late May are thick, substantial flower stalks that are loaded with blunt, fat buds. These buds open in mid June to show off deep lavender-purple flowers with heavily spotted maroon throats that are nothing less than breathtaking. One of the great things about 'Dalmatian Purple' is the profuseness of its bloom...it really packs the big blossoms in on its flower stalks and distributes them completely around the stem making them look even more showy. This selection will be a blooming thriller in the garden into July and is a perfect early to mid summer focal point plant for the middle or back of your garden. It loves full sun or partial sun and will thrive in a well drained soil area.

- Hardiness Zone: 4-8
- Height: 2-3 Feet
- Spread: 12-15 Inches
- ***Full Sun***



DALMATIAN PEACH FOXGLOVE



DALMATIAN PURPLE FOXGLOVE

## **Echinacea**

### ***Prairie Splendor Coneflower***

Get ready to be blown away by 'Prairie Splendor', a plant that has everything you want in a summer blooming perennial. You'll love its shorter denser form that keeps it 6-12" lower and more compact than varieties like 'Ruby Star' and you'll love its earlier bloom time starting in June, a full month earlier than 'Ruby Star' yet continuing to flower just as long into September. Great form and an earlier flower date have not shortchanged 'Prairie Splendor' when it comes to fragrance, amount of bloom and its ability to produce nectar and seed that will attract a huge variety of native insects, butterflies and birds. In short, you'll want to use this plant often throughout any of your sunny, well-drained gardens.

- Hardiness Zone: 3-8
- Height: 18-22 Inches
- Spread: 15-18 Inches
- ***Partial Sun/Full Sun***



PRAIRIE SPLENDOR CONEFLOWER





GREEN TWISTER CONEFLOWER

### ***Green Twister Coneflower***

'Green Twister' has lemon-lime petals that transition to a light pink or carmine red near the center cone. A robust plant with strong stems to hold the flowers upright when they bloom in mid-summer to fall. Stems lengthen after the first year and make excellent cut flowers. This plant is a natural mutation of 'Magnus', it is not a hybrid and therefore overwinters better than many modern hybrids. Coneflowers are well known for attracting butterflies and other pollinators and the seeds are relished by birds in the autumn. Drought resistant once established and easy to grow in sun and light shade.

- Hardiness Zone: 3-8
- Height: 2-3 Feet
- Spread: 18-24 Inches
- ***Partial Sun/Full Sun***

### ***White Swan Coneflower***

Deep green, thick, serrated foliage forms a dense basal mound of leaves in the garden that gives rise to sturdy flower stalks in mid-June topped by big, squat buds. Buds unfurl in late July producing big, 3-4" diameter, white rayed daisies with a big, bulbous center cone that puts on a garden show that you and the local butterflies will appreciate throughout the summer bloom season that stretches into early September. 'White Swan' loves a full sun spot and puts on a fantastic show in well-drained soil planted in a group.

- Hardiness Zone: 3-8
- Height: 24-36 Inches
- Spread: 18-24 Inches
- ***Partial Sun/Full Sun***



WHITE SWAN CONEFLOWER

## **Helleborus Frostkiss**

### ***Penny's Pink Lenten Rose***

Early spring may soon be your favorite time of year once you get a glance of this selection's exciting bloom of mauve-pink blooms that mature to a luscious deep pink. Even better, this yearly display of spring color rises above shimmering green foliage that features unique white marbling creating a foliage show that keeps the garden lively even after the bloom has passed. Deer resistant and rabbit resistant, you'll love how this selection makes your shady area shine!

- Hardiness Zone: 4-9
- Height: 18-24 Inches
- Spread: 18-24 Inches
- ***Full Shade***



PENNY'S PINK LENTEN ROSE



## Hemerocallis Rainbow Rhythm

### ***Siloam Peony Display Daylily***

Talk about an attention getter in the garden, this award winning daylily produces an elegant display of fragrant, fully double, ruffled, peach colored flowers with a rose blush near the center. With a bloom that looks more like a Peony than a Daylily, this plant will fill the garden with large 6" flowers in July and again later in the season. Group these drought tolerant, easy to grow beauties together in any sunny to partially shaded garden and enjoy the show.

- Hardiness Zone: 3-9
- Height: 18-20 Inches
- Spread: 18-24 Inches
- Spacing: 18-24 in
- ***Partial Sun/Full Sun***



SILOAM PEONY DISPLAY DAYLILY

## Heuchera

### ***Midnight Rose Coralbells***

Just when you think you've seen it all in the world of Heuchera, you can always count on Terra Nova Nurseries to find something different. 'Midnight Rose' is very different, combining the deep, dark, luscious foliage of Heuchera 'Obsidian' with neon pink colored speckles sprinkled throughout the leaf. It's an incredible color combination for the landscape and makes a perfect carefree landscape plant that you can use with confidence. What a perfect plant for the front or middle of any partially shaded garden or for use in a container. Like all Coral Bells, 'Midnight Rose' is drought resistant, deer resistant and, while not offering much in the bloom department, it offers great foliage color from spring through fall.

- Hardiness Zone: 4-8
- Height: 10-12 Inches
- Spread: 15-18 Inches
- ***Partial Shade***



MIDNIGHT ROSE CORAL BELLS

### ***Northern Exposure Red Coral Bells***

Dark red, deeply lobed foliage emerges in spring to form an upright mound that serves as the backdrop for long, thin stems that rise above bearing white flowers in May. Its striking year round foliage color makes it perfect for massing in the front of a garden and for creating a long season of color in a container. Attracts hummingbirds and drought resistant when established.

- Hardiness Zone: 3-9
- Height: 12-15 Inches
- Spread: 15-18 Inches
- Spacing: 15-18 in
- ***Full Shade/Partial Sun/Full Sun***



NORTHERN EXPOSURE RED CORAL BELLS





WILDBERRY CORAL BELLS

## Heuchera hybrid Dolce

### **Wildberry Coral Bells**

Get a splash of purple in your garden! Large, scalloped, incredibly glossy leaves are a bold shade of purple. Charcoal veins accent the leaves. Dark stems hold rosy pink calyxes and white flowers.

- Hardiness Zone: 4-9
- Height: 10-14 Inches
- Spread: 16-20 Inches
- **Full Shade/Partial Sun/Full Sun**

## Hosta

### **Fire and Ice Hosta**

Brighten up your garden with this sport of Hosta 'Patriot' that features dense, spreading form and full waxy textured leaves that are pure white in the center bordered by deep, dark green leaf edges. The color contrast is outstanding and its size is such that it rarely overwhelms the garden. In fact, even in a small garden, you can magnify the effect of its eye catching foliage by grouping 'Fire and Ice' to produce illumination without the aid of low voltage lights! 'Fire and Ice' adds even more interest in mid-July when flower stalks rise above the foliage producing light lavender, lightly fragrant flowers. Plant this in partial to full shade in moist, well-drained soil for optimum performance.

- Hardiness Zone: 3-8
- Height: 8-10 Inches
- Spread: 30-36 Inches
- **Full Shade**

### **Francee Hosta**

A colorful shade garden workhorse, this selection shines with heart shaped, dark green leaves ringed with striking white margins. Flower spikes climb above the foliage topped with lavender flowers in August.

- Hardiness Zone: 3-8
- Height: 21-24 Inches
- Spread: 30-36 Inches
- **Full Shade**

### **Patriot Hosta**

This close relative of 'Francee' shines like a beacon in dark, shady areas with bold white margins surrounding deep green, heart shaped foliage. Spectacular color, great mounding form, and lavender flowers that rise above the foliage on long stalks in August complete a beautiful picture.

- Hardiness Zone: 3-8
- Height: 24-30 Inches
- Spread: 24-30 Inches
- **Partial Shade**



FIRE AND ICE HOSTA



FRANCEE HOSTA



PATRIOT HOSTA



## Iris germanica

### ***Immortality Bearded Iris***

Sweetly scented, pure white blooms are held high above the green sword like foliage. The first round of flowers typically bloom in June and a second repeat performance in late summer. Award winning.

- Hardiness Zone: 3-8
- Height: 24-30 Inches
- Spread: 18-24 Inches
- **Partial Sun/Full Sun**

### ***Sugar Blues Reblooming Bearded Iris***

'Sugar Blues' is a deep blue reblooming iris, with yellow and white beards, and a sweet fragrance. This tall Iris put on a show in late spring, and again late into the summer. These beauties are deer and rabbit resistant, drought-tolerant, and hardy in cold climates.

- Hardiness Zone: 3-9
- Height: 32-38 in
- Spread: 12-24 in
- **Partial Sun/Full Sun**



IMMORTALITY BEARDED IRIS



SUGAR BLUES REBLOOMING BEARDED IRIS

## Iris sibirica

### ***Cape Cod Boys Siberian Iris***

Get a beach buzz when you gaze at this summer bloom; petals start periwinkle blue and brighten with darker blue veining in a mottled pattern that reminiscent of the ocean, bright yellow signals add a splash of sunshine completing the beach theme, borne over clumps of sword-shaped green leaves.

- Hardiness Zone: 3-8
- Height: 24-30 Inches
- Spread: 18-24 Inches
- **Full Sun**

### ***Caesar's Brother Siberian Iris***

Dark violet buds open to clear purple blooms that change to white, then gold in the center. A favorite of many gardeners. Tolerant of partial shade and moist soils. Blooms in July.

- Hardiness Zone: 3-8
- Height: 32 Inches
- Spread: 24-30 Inches
- **Partial Sun**



CAPE COD BOYS SIBERIAN IRIS

## Leucanthemum X superbum

### ***Becky Shasta Daisy***

Single 2-3" white flowers all summer long if dead headed. Lustrous deep green foliage. Hardy and durable if planted in well-drained soil and full sun. June-July. 2003 Perennial Plant of the Year.

- Hardiness Zone: 4-8
- Height: 3 Feet
- Spread: 3 Feet
- **Full Sun**



CAESAR'S BROTHER SIBERIAN IRIS



BECKY SHASTA DAISY





TINY DIAMOND LILY

## Lilium

### ***Tiny Diamond Lily***

A selection from the Lily Looks series of Asiatic lily from the Netherlands. Miniature and compact in stature, 'Tiny Diamond' produces large, upright facing, rose-red flowers with white centers; up to 6 per stem. Originally developed for containers, 'Tiny Diamond' is a great addition to any border planting.

- Hardiness Zone: 3-9
- Height: 10-16 Inches
- Spread: 10-12 Inches
- **Partial Sun/Full Sun**

## Lupinus p. lupini

### ***White Shades Lupine***

Dwarf perennial bearing spikes of pea-like white flowers in early and midsummer among fern-like foliage. Compact form and full-sized flowers make this perennial a great choice for mixed perennial beds.

- Hardiness Zone: 4-8
- Height: 8-12 in
- Spread: 10-14 in
- **Partial Sun/Full Sun**



WHITE SHADES LUPINE



SUNDIAL WILD LUPINE

## Lupinus perennis

### ***Sundial Wild Lupine***

A natural treasure, Lupine is the one native plant that everyone, gardener or non-gardener, goes crazy about. Who can blame them with a flower that will light up a garden or any natural meadow with fat, tall, somewhat open spikes of bluish-purple flowers starting in late May and continuing into early July. It is a flower show that has become a signature event in the northeastern states and Canada on a plant that is quite easy to grow once established in the proper landscape situation. Like Lavender, Lupine craves drainage to thrive. It must be planted in a sunny area in soil with a heavy dose of gravel. Try planting this deer resistant, butterfly attracting beauty in groups for a powerful show of late spring color.

- Hardiness Zone: 3-8
- Height: 2-3 Feet
- Spread: 15-18 Inches
- **Full Sun**

## Lupinus

### ***Staircase Blue Lupine***

A spectacular colorful bloom that is perfect for cutting. Attracts butterflies and hummingbirds. Incredible when massed in the middle of a landscape bed.

- Hardiness Zone: 4-8
- Height: 16-20 Inches
- Spread: 12-18 Inches
- **Full Sun**



STAIRCASE BLUE LUPINE



### ***Staircase Orange Lupine***

This Lupine breakthrough will bloom from spring through early summer with towering spikes of orange with red flowers. Lupine has always been a northern staple but the Staircase™ series brings the joy of Lupine even to warmer areas! This spectacular, colorful bloom is perfect for cutting and attracts butterflies and hummingbirds. Incredible when massed in a landscape, long-blooming.

- Hardiness Zone: 4-8
- Height: 16-20 Inches
- Spread: 12-18 Inches
- **Full Sun**

### ***Staircase Red Lupine***

A spectacular colorful bloom that is perfect for cutting. Attracts butterflies and hummingbirds. Incredible when massed in the middle of a landscape bed.

- Hardiness Zone: 4-8
- Height: 16-20 Inches
- Spread: 12-18 Inches
- **Full Sun**

### ***Staircase Rose Lupine***

A spectacular colorful bloom that is perfect for cutting. Attracts butterflies and hummingbirds. Incredible when massed in the middle of a landscape bed.

- Hardiness Zone: 4-8
- Height: 16-20 Inches
- Spread: 12-18 Inches
- **Full Sun**

### ***Staircase Yellow Lupine***

Velvety green foliage forms a mound in spring that serves as the launching pad for thick stems that rise above bearing towers of big, bright yellow blossoms. This Lupine is perfect for massing in the middle of the garden and is the perfect cutting flower, too. Even more colorful are the butterflies and hummingbirds that will flock to this plant's bloom!

- Hardiness Zone: 4-8
- Height: 16-20 Inches
- Spread: 12-18 Inches
- **Full Sun**

### ***Staircase Dark Blue & Yellow Lupine***

This Lupine breakthrough will bloom from spring through early summer with towering spikes of blue with yellow flowers. Lupine has always been a northern staple but the Staircase™ series brings the joy of Lupine even to warmer areas! This spectacular, colorful bloom is perfect for cutting and attracts butterflies and hummingbirds. Incredible when massed in landscape, long blooming.

- Hardiness Zone: 4-8
- Height: 16-20 Inches
- Spread: 12-18 Inches
- Spacing: 12-18 in
- **Full Sun**



STAIRCASE ORANGE LUPINE



STAIRCASE RED LUPINE



STAIRCASE ROSE LUPINE



STAIRCASE YELLOW LUPINE

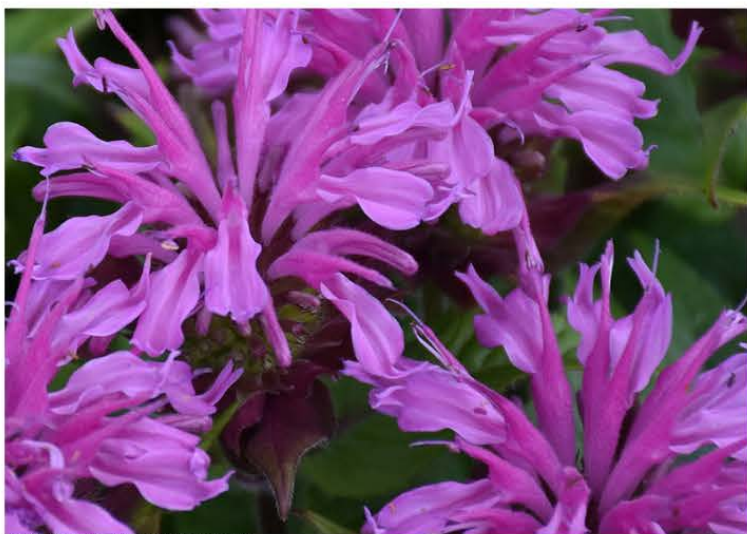


STAIRCASE DARK BLUE & YELLOW LUPINE





BALMY PURPLE BEE BALM



PARDON MY LAVENDER BEE BALM



JACOB CLINE BEE BALM

## Monarda Didyma

### ***Balmy Purple Bee Balm***

Showing the best mildew resistance seen so far in Monardas, Balmy Purple is a power house of a bloomer on a compact, dwarf form. Purple flowers bloom in late spring into summer and attract loads of colorful butterflies and hummingbirds as they seek out its sweet nectar. No butterfly garden is complete with out one of these. Easy to grow with the added bonus of being deer and rabbit resistant! Great color and bold flower texture add interest and charm for the entire season.

- Hardiness Zone: 4-10
- Height: 10-12 Inches
- Spread: 12-14 Inches
- **Full Sun**

### ***Pardon My Lavender Bee Balm***

Tuck this sweet and petite perennial into the front of your flower border where it will create a colorful edge of dark cherry pink flowers in high summer. Butterflies adore it!

- Hardiness Zone: 4-8
- Height: 14-18 Inches
- Spread: 10-12 Inches
- Spacing: 10-12 in
- **Partial Sun/Full Sun**

### ***Jacob Cline Bee Balm***

Easy to grow and aggressive, this fragrant foliated selection will stake out a block of space in any sunny to partially sunny garden and deliver beauty in the form of spectacular flowers and in the many colorful garden creatures it attracts. Its distinctive square stems grow strongly upright, loaded with deep green, aromatic foliage that serves as the backdrop for terminal buds that develop in early summer. These buds open in July to a fireworks show of deep scarlet, 3" long tubular flowers that are held in beefy whorls above the foliage that continues into September. Hummingbirds and colorful butterflies find it impossible to ignore the nectar these flowers provide and you won't be able to resist the colorful beauty. Plant 'Jacob Cline' in a place where it can get big and has good airflow to further reduce the chance of mildew on this highly resistant variety.

- Hardiness Zone: 3-8
- Height: 3-4 Feet
- Spread: 3-4 Feet
- **Partial Sun/Full Sun**



## Monarda

### ***Blue Stocking Bee Balm***

If native insects could personally thank you, they would be lining up at your door after you planted 'Blue Stocking' in your garden. There is just no better summer nectar provider than this spectacularly colored Bee Balm. This selection forms a strongly upright yet spreading potrait in the landscape with rigid square stems lined with large, pointed, very fragrant leaves that look and feel almost like velvet to the touch. Each stem is topped with globes of buds that open in early July to reveal tubular, two lipped blooms of shocking violet-blue that keep on blooming right on through August. The flowers really make an impression especially with your butterfly and hummingbird friends who will line up to gorge themselves on sweet nectar. 'Blue Stocking' is a perfect plant for grouping in the back of any garden in sun or partial shade, is more mildew tolerant than many Bee Balms and is very tolerant of moist to wet soil areas.

- Hardiness Zone: 4-8
- Height: 30-36 Inches
- Spread: 18-24 Inches
- **Full Sun**



BLUE STOCKING BEE BALM

## Monarda Sugar Buzz

### ***Grape Gumball Bee Balm***

Deep green foliage packs tightly on upright stems that form buds at the top in early July. Buds open in mid July to reveal a solid veneer of 2.5" magenta purple blooms that continues through late summer. Fragrant blooms attract butterflies and hummingbirds. Deer and powdery mildew resistant.

- Hardiness Zone: 4-8
- Height: 16-20 Inches
- Spread: 12-18 Inches
- **Full Sun**



GRAPE GUMBALL BEE BALM

## Monarda hybrid

### ***Leading Lady Plum Bee Balm***

Tuck this early blooming bee balm into the front of your flower border to create a colorful swath of magenta purple flowers. Butterflies and hummingbirds will adore it!

- Hardiness Zone: 4-8
- Height: 10-14 Inches
- Spread: 22-28 Inches
- Spacing: 12-24 in
- **Partial Sun/Full Sun**



LEADING LADY PLUM BEE BALM





MON AMIE BLUE FORGET-ME-NOT

## Myosotis sylvatica

### ***Mon Amie Blue Forget-Me-Not***

Forms a low mound of grey-green leaves, smothered with clusters of soft-blue flowers, each with a tiny yellow eye. Excellent for massing with spring-blooming bulbs. After flowering, discard all but a few plants, in order to produce seed for next year. A strain selected by Pan-American Seed. An early flowering plant that grows best in partial shade in moist soil. May also do well in full sun if kept moist. Grows best in rich, moist soil. Mulch thoroughly to conserve moisture and to provide winter protection.

- Hardiness Zone: 3-8
- Height: 6-8 Inches
- Spread: 6-8 Inches
- **Partial Shade**

## Papaver orientale

### ***Brilliant Oriental Poppy***

Brilliant certainly describes these stunning blooms! Vivid, fiery orange-scarlet blooms reach over 6" across, accented by a jet black eye. Flowers are held above clumps of hairy, deep green foliage, which does tend to die back in late summer. Excellent border plant for the spring garden. Blooms May-June.

- Hardiness Zone: 3-8
- Height: 30-36 Inches
- Spread: 36-42 Inches
- **Full Sun**



BRILLIANT ORIENTAL POPPY



LUMINARY OPALESCENCE TALL GARDEN PHLOX

## Phlox hybrid

### ***Luminary Opalescence Tall Garden Phlox***

Light pink flowers have dark pink eyes and form defined panicles. Dark green leaves. One of the very best for disease resistance; a care-free plant.

- Hardiness Zone: 3-8
- Height: 30-32 in
- Spread: 24-28 in
- **Full Sun**

## Phlox stolonifera

### ***Home Fires Creeping Phlox***

It has gorgeous true pink flowers that bloom during May and June and wanders the forest floor by way of rooting at the nodes. Give it moist, humus-enriched soil in part shade and this plant will be happy.

- Hardiness Zone: 3-8
- Height: 6-8 Inches
- Spread: 18-24 Inches
- **Partial Shade**



HOME FIRES CREEPING PHLOX



### ***Sherwood Purple Creeping Phlox***

How can you go wrong with a plant that grows in shade, blooms like crazy in early to mid spring and is one of the most low maintenance plants you can find? You can't go wrong with a plant like 'Sherwood Purple' that flows and tumbles over the contour of the land with prostrate branches that are tightly packed with deep green foliage. Mid to late April transforms this plant from a great groundcover to a fantastic ocean of color with deep purple star-shaped flowers covering the branches and flower over the landscape. Native insects are thrilled by this early nectar source and you'll be thrilled to know that this plant is great to plant in groups in the shade and works so well planted amongst other natives!

- Hardiness Zone: 5-8
- Height: 6-10 Inches
- Spread: 2-3 Feet
- ***Partial Sun/Full Shade***



SHERWOOD PURPLE CREEPING PHLOX

## **Phlox subulata**

### ***White Moss Phlox***

Shiny green, needle-like foliage forms an evergreen mat. Looks especially pretty draped over rock walls. Masses of white flowers begin flowering in late April. Perfect for massing in sun or part shade. It's a magnet for butterflies, hummingbirds and native insects.

- Hardiness Zone: 3-8
- Height: 4-6 in
- Spread: 18-24 in
- ***Full Sun***



WHITE MOSS PHLOX



CANDY STRIPE MOSS PHLOX

### ***Candy Stripe Moss Phlox***

Thick, evergreen, and mat forming, this selection is a flowering dynamo from late April through May displaying a plant-obscuring collection of flowers that produce a unique look in the landscape with their white petals bisected with a pink stripe. 'Candy Stripe' is an easy care plant that loves well drained soil, tolerates low fertility rates, and is deer resistant.

- Hardiness Zone: 3-8
- Height: 3-6 Inches
- Spread: 2-3 Feet
- ***Full Sun***

## **Platycodon grandiflorus POP STAR**

### ***Blue Balloon Flower***

This Pop Star™ balloon flower boasts huge blue flowers that burst into a star shape! It is a very compact habit, making it great for outside, or inside. Works well in a rock garden, as a border front for beds or patio containers, and is easy and fast to grow!

- Hardiness Zone: 3-9
- Height: 6-8 Inches
- Spread: 10-12 Inches
- ***Partial Sun/Full Sun***



BLUE BALLOON FLOWER





WHITE BALLOON FLOWER

### **White Balloon Flower**

This Pop Star™ balloon flower boasts huge white flowers that burst into a star shape! It is a very compact habit, making it great for outside, or inside. Works well in a rock garden, as a border front for beds or patio containers, and is easy and fast to grow!

- Hardiness Zone: 3-9
- Height: 6-8 Inches
- Spread: 10-12 Inches
- **Partial Sun/Full Sun**

## **Rudbeckia fulgida deamii**

### **Black Eyed Susan**

This Native Black Eyed Susan sets itself apart from the group as it combines beauty with strength, and offers slightly larger orange/yellow flowers than the group. It is pollinator friendly, and is pest, including deer, and disease resistant. This easy to grow and maintenance free beauty make it a great addition to any garden or cut arrangement.

- Hardiness Zone: 4-9
- Height: 24-36 Inches
- Spread: 12-24 Inches
- **Partial Sun/Full Sun**



BLACK EYED SUSAN



AMERICAN GOLD RUSH BLACK EYED SUSAN

## **Rudbeckia**

### **American Gold Rush Black Eyed Susan**

Move over 'Goldsturm'! Here is a better Black-eyed Susan with a slightly more compact form, incredible flower power and outstanding resistance to Septoria leaf spot, the scourge of Rudbeckia. That means beautiful, compact, blemish-free plants that will bloom their brains out from July through September. A perfect plant for massing and for containers.

- Hardiness Zone: 3-8
- Height: 18-21 Inches
- Spread: 18-24 Inches
- **Full Sun**

## **Salvia**

### **Bumbleberry Garden Sage**

While the size of this plant stays mini, the flower power is definitely maxi! Deep green foliage on numerous upright stems are topped with masses of small buds that open to spikes of small, fuchsia-pink flowers backed by wine red calyxes producing a stunning color show in early June.

- Hardiness Zone: 3-8
- Height: 6-8 Inches
- Spread: 18-24 Inches
- **Partial Shade**



BUMBLEBERRY GARDEN SAGE



### ***Color Spires Azure Snow Perennial Salvia***

This colorful perennial produces deep violet blue and white bicolor flower spikes atop the neatly mounded, aromatic foliage. Lovely when planted in drifts. Attracts butterflies and hummingbirds.

- Hardiness Zone: 3-8
- Height: 18-20 Inches
- Spread: 18-20 Inches
- Spacing: 18-20 Inches
- **Full Sun**

### ***Color Spires Snow Kiss Perennial Salvia***

This colorful perennial produces large white flowers with a soft pink lip atop the neatly mounded, aromatic foliage. Lovely when planted in drifts. Attracts butterflies and hummingbirds.

- Hardiness Zone :3-8
- Height: 20-22 in
- Spread: 22-24 in
- **Full Sun**



COLOR SPIRES AZURE SNOW PERENNIAL SALVIA

## **Tiareella cordifolia**

### ***Running Tapestry Foamflower***

'Running Tapestry' may be a tough, easy care plant but this aggressively growing groundcover also brings a beautiful, refined look to a shaded or partially shaded area. Heart shaped foliage crowds onto dense, short, spreading plants carrying a pleasing green color, offset by speckled red veining and a red central leaf area. This foliage forms a dense carpet that gives rise to numerous flower stalks that carry profuse, small, white blooms above the plant from late April into June. These flowers are an abundant nectar source for beneficial native bees and insects while providing instant light to a landscape's darker spots. Plant 'Running Tapestry' in groups and enjoy the foliage and flower show.

- Hardiness Zone: 3-8
- Height: 18-10 Inches
- Spread: 15-18 Inches
- **Full Shade**



COLOR SPIRES SNOW KISS PERENNIAL SALVIA



RUNNING TAPESTRY FOAMFLOWER

## **Weigela florida**

### ***Wine & Roses Weigela***

A great new plant to provide color throughout the growing season with beautiful, dark burgundy foliage and an abundant display of reddish pink flowers that any hummingbird will love!! Foliage color intensifies as autumn approaches!

- Hardiness Zone: 4-8
- Height: 4-5 Feet
- Spread: 4-5 Feet
- **Full Sun**



WINE & ROSES WEIGELA





CZECHMARK TRILOGY WEIGELA

### ***Czechmark Trilogy Weigela***

Selected especially for their pure, true colors and floriferous blooming, Czechmark Trilogy® is an absolute dazzler that blooms in late spring with three colors at once - enjoy white, pink, and red flowers all on one plant! Czechmark Weigela are a new series that showcases just how much flower power this old-fashioned favorite is capable of.

- Hardiness Zone: 4-8
- Height: 36-42 Inches
- Spread: 36-42 Inches
- ***Partial Sun/Full Sun***

### **Weigela x Date Night**

#### ***Maroon Swoon Weigela***

Rich red flowers contrasts nicely with the deep green foliage creating a colorful combo for the mixed garden bed.

- Hardiness Zone: 4-8
- Height: 4-5 Feet
- Spread: 3-4 Feet
- ***Partial Sun/Full Sun***



MAROON SWOON WEIGELA



A close-up photograph of green tree leaves, likely from a birch, with the word "TREES" overlaid in a stylized, outlined font. The leaves are vibrant green and show detailed vein patterns. The background is a soft, out-of-focus bokeh of light and green, suggesting sunlight filtering through the canopy. The word "TREES" is positioned in the lower right quadrant, tilted slightly upwards to the right.

**TREES**



## Acer rubrum

### **Autumn Flame Red Maple**

Incredibly easy to grow, 'Autumn Flame' is an outstanding looking tree with a clean summer look and blazing fall foliage color that make it a plant that should be used even more. This is one of the earliest flowering of all our native maples with its small, deep red flowers opening in early to mid-April providing one of the earliest nectar sources for native bees and butterflies. Medium green, trident shaped leaves form a thick but not impenetrable head that provides great shelter and nesting area for a wide variety of birds. There is not a more spectacular foliage show in the fall than 'Autumn Flame' with its early to mid-Autumn explosion of fiery crimson color. This American Beauties signature tree tolerates moisture and even wet feet while performing famously in the landscape.

- Hardiness Zone: 3-8
- Height: 45-50 Feet
- Spread: 35-40 Feet
- **Partial Sun/Full Sun**

### **Red Sunset Red Maple**

A great shade tree with a fiery red fall color that's simply stunning! Fairly quick growing with bright green, textured summer foliage, this selection has a stately pyramidal to rounded form and holds up well in any landscape.

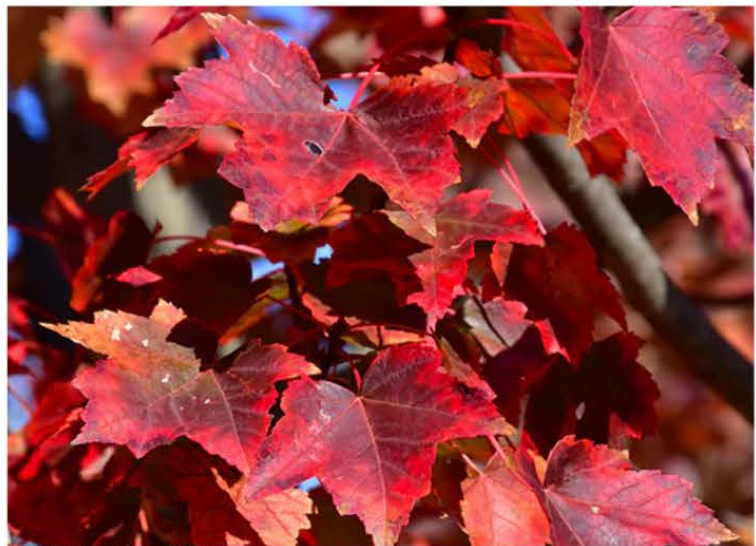
- Hardiness Zone: 4-8
- Height: 4-5 Feet
- Spread: 3-4 Feet
- **Partial Sun/Full Sun**

## Acer saccharum

### **Sugar Maple**

Here's the tree that made New England famous! It's easy to see why this tree is so prized once you look at its broadly oval to round form and its thick but not impenetrable canopy of dark green, trident shaped leaves that provide medium shade from the summer's heat. Its shade and canopy is not just appreciated by humans, it is an essential American Beauties plant to provide cooling, nesting, and cover for a multitude of our area's birds. Of course, the biggest show for us humans comes when, as September cools, this plant's foliage explodes into a mixture of yellow, orange, and red that always keeps those leaf peepers coming back for more!

- Hardiness Zone: 4-8
- Height: 60-70 Feet
- Spread: 50-60 Feet
- **Partial Sun/Full Sun**



AUTUMN FLAME RED MAPLE



RED SUNSET RED MAPLE



SUGAR MAPLE





HERITAGE RIVER BIRCH

## Betula nigra

### **Heritage River Birch**

'Heritage' is a fast-growing tree with layers of brown bark peeling back to reveal white inner bark. Chickadees, sparrows, wild turkey, pine siskins, finches and other birds love the seed. Glossy, light green leaves turn yellow in fall and distinctive bark that starts off reddish-pink and fades through cinnamon to a creamy tan-white with age, and which peels in thickly curled strips. Ideal specimen.

- Hardiness Zone: 4-8
- Height: 40-70 Feet
- Spread: 40-60 Feet
- **Full Sun**

## Caragana arborescens

### **Walker Weeping Pea Tree**

Small deciduous tree with a delicate weeping form. Finely-dissected green foliage is arranged in small, feathery leaflets, producing a soft, fern-like texture. In spring, yellow, pea-like flowers adorn the tree for lovely spring color. Very tolerant of cold temperatures, as well as salt, wind, and poor soil. A great choice for difficult growing conditions.

- Hardiness Zone: 2-8
- Height: 5-6 Feet
- Spread: 3-4 Feet
- **Full Shade**



WALKER WEEPING PEA TREE

## Chionanthus virginicus

### **White Fringetree**

This easy to grow and widely underused American Beauties selection is the perfect combination of beauty, utility, and wildlife attractiveness. Long, wide, deep green spear-like leaves cover this multi-stemmed small tree and serve as a perfect backdrop for 4-6 drooping strings of white fringe-like petals from mid-May to mid-June. In late summer, bunches of dark, bluish-black fruit appear, providing prized food for local birds and other garden critters. Even with its attractive fruit and flowers, Fringetree may save its best show for last with a bright yellow fall foliage display that is as bright as it is beautiful. Use Fringetree in your landscape in any sunny location that calls for a small specimen or it can even be grouped along the border to form a unique hedge or windbreak that will enhance your landscape with its ability to house many colorful local birds.

- Hardiness Zone: 3-9
- Height: 12-20 Feet
- Spread: 12-20 Feet
- **Partial Sun/Full Sun**



WHITE FRINGETREE



## Juniperus virginiana

### **Blue Arrow Eastern Red Cedar**

Blue Arrow is one of those great "plant it and forget it" plants even though its outstanding blue-green foliage and memorable tall, very narrow form will make it hard to forget! The natural oils it produces protects it from drought making this tough plant a sure bet as a hedge or privacy screen in even the roughest, driest soil or in hot, sunny areas. 'Blue Arrow' grows up to 15 feet tall and an amazing 2 feet wide making it perfect for a narrow screen where space is limited and its precise, upright form makes it an easy fit for formal garden use. Even better, 'Blue Arrow's' bright blue to dark green foliage is deer resistant and can tolerate seashore salt and road salt conditions. Easy care and great looking... it would be great if all plants were this easy!

- Hardiness Zone: 3-8
- Height: 12-15 Feet
- Spread: 2-3 Feet
- **Partial Sun/Full Sun**



BLUE ARROW EASTERN RED CEDAR

## Malus x adstringens

### **Gladiator Crabapple**

Gladiator™ is an excellent ornamental tree with a profusion of bright pink flowers followed by small reddish-purple fruit on an upright crown. Foliage is glossy bronze-purple and disease resistant.

- Hardiness Zone: 2-8
- Height: 15-20 Feet
- Spread: 6-10 Feet
- **Full Sun**



GLADIATOR CRABAPPLE

## Malus

### **Ruby Tears Weeping Crabapple**

This smaller more confined weeping Crabapple selection is proof that big landscape presence can come in smaller packages. Topping out at a mere 10' with a slightly wider spread, Ruby Tears™ sports pools of luminous pink blossoms in early May backed by colorful foliage on naturally weeping, pendulous branches. While most Crabapples are prized for their bloom, foliage is just as important on this selection as it emerges as a bright merlot shade behind those pink flowers and slowly fades to rich, cool, burgundy-green for the hot summer months. Small 1/2" bright red berries appear in late summer, sure to delight your native wildlife. Plant Ruby Tears™ in full sun and use it as a stunning, 4 season spectacular specimen in smaller places where larger plants are a real nuisance.

- Hardiness Zone: 4-8
- Height: 8-10 Feet
- Spread: 12-15 Feet
- **Full Sun**



RUBY TEARS WEEPING CRABAPPLE





SPRING SNOW CRABAPPLE

### ***Spring Snow Crabapple***

This decorative crabapple produces an airy blanket of pure white flowers in the spring. This beauty is also tough, and resistant to rust and mildew. Its lack of fruit means that you get to enjoy the spring show without the mess below!

- Hardiness Zone: 4-8
- Height: 20-25 Feet
- Spread: 15-20 Feet
- **Full Sun**

## **Picea abies**

### ***Norway Spruce***

Possibly the most adaptable needled evergreen in the world, Norway Spruce is not only functional but attractive. Gracefully arching branches hold pendulous, dark green foliage that hangs down from the main branches loaded with cones. These plants are very hardy and adaptive and love the sun.

- Hardiness Zone: 3-8
- Height: 80-100 ft
- Spread: 30-40 ft
- **Full Sun**



NORWAY SPRUCE



WEeping CHERRY

## **Picea pungens**

### ***Baby Blue Blue Spruce***

Finally, a seed sourced Blue Spruce that is actually dependably blue!! That's something worth celebrating and you will once you check out this plant's pleasing blue needles that stiffly whorl around stiff, ascending branches to create an upright, pyramidal tree that is hard not to admire. 'Baby Blue' can be used as a specimen or grown together to create a stunning large hedge or windbreak. 'Baby Blue' will thrive in full sun and well-drained soil, just remember to give this big boy some room to grow then stand back and admire the color!

- Hardiness Zone: 3-8
- Height: 40-50 Feet
- Spread: 15-20 Feet
- **Partial Sun/Full Sun**



BABY BLUE BLUE SPRUCE

## **Prunus subhirtella Pendula**

### ***Weeping Cherry***

This graceful weeping form is prized in the landscape. Small pink flowers cover the slender, pendulous branches giving a flower fountain appearance in late April to early May. Very hardy, top grafted at 6'.

- Hardiness Zone: 4-8
- Height: 20-25 Feet
- Spread: 20-25 Feet
- **Full Sun**



## Salix niobe

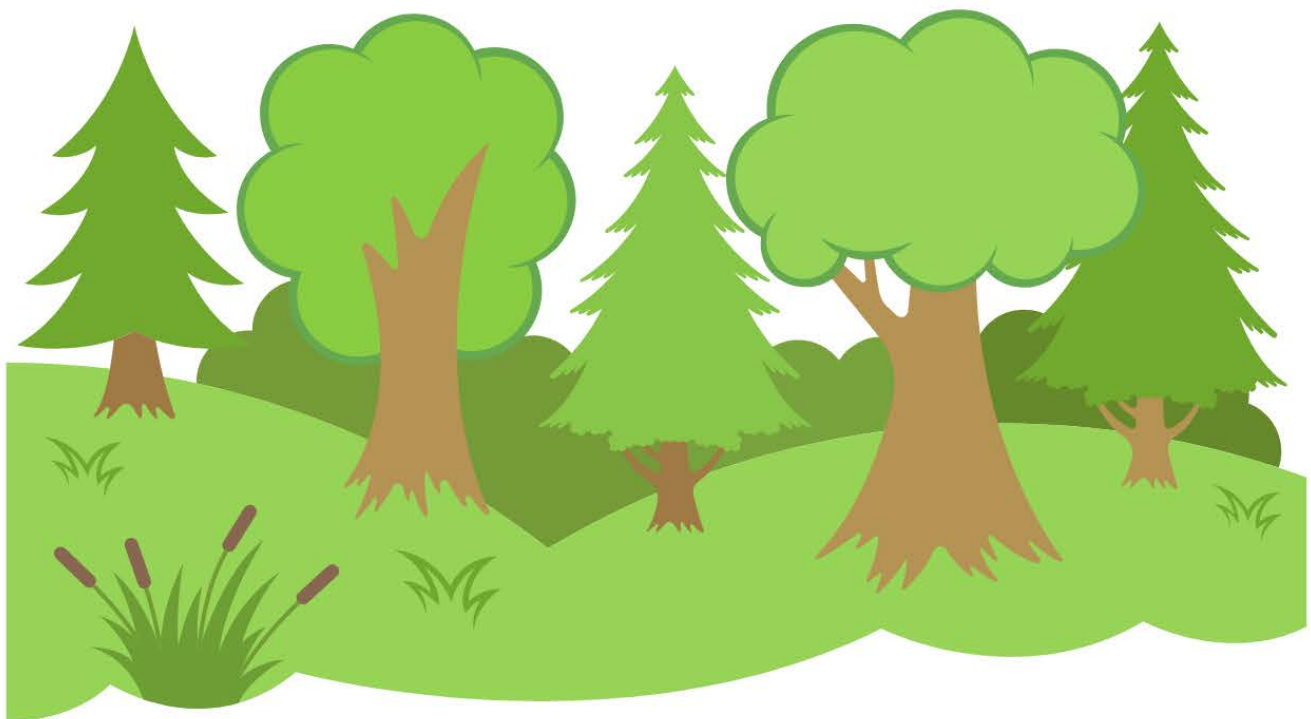
### ***Weeping Willow***

Is there another tree growing in the northeast that is as recognizable as the Weeping Willow?? Fast growing and tolerant of wet areas, the delicate, gracefully pendulous branches of this plant seem to touch everyone with their beauty. A great specimen that needs room to deliver the most impact in the landscape.

- Hardiness Zone: 4-8
- Height: 60-70 Feet
- Spread: 40-50 Feet
- ***Partial Sun/Full Sun***



WEeping WILLOW







**SHRUBS**



## Azalea

### ***Electric Lights Red***

Finally, a true fire engine red flower on a hardy azalea for northern gardens. Electric Lights Red is a fiery red in early spring, blooming just after the fresh new foliage emerges. It forms an upright mound in the landscape and will tolerate both full sun and part shade. Electric Lights Red also has flower buds that are hardy to -30°F, making it a safe choice for zone 4 gardeners.

- Hardiness Zone: 4-7
- Height: 4-5 ft
- Spread: 3-4 ft
- ***Partial Sun/Full Sun***



AZALEA ELECTRIC LIGHTS RED

## Azalea viscosum

### ***Ribbon Candy Swamp Azalea***

Viscosum Azaleas are not used enough in the landscape but maybe this one is the variety that will get people to take the plunge! Like all Viscosums, 'Ribbon Candy' is a dense, slightly taller than wide plant with thick, bluish-green foliage. In mid to late June multiple buds at branch ends open to display masses of pink, star shaped flowers with a distinctive white stripe that bisects each petal and a fragrance that will put you in landscape heaven. 'Ribbon Candy' is easy to grow and loves to be naturalized in semi-shaded woodland areas.

- Hardiness Zone: 4-8
- Height: 5-7 Feet
- Spread: 6-8 Feet
- ***Partial Sun/Full Sun***



RIBBON CANDY SWAMP AZALEA



CRANBERRY CREEK BOXWOOD

## Buxus

### ***Cranberry Creek Boxwood***

Dense and compact with small, deep green, lustrous foliage this selection forms a tight pyramid that looks superb year round and has numerous landscape uses. Perfect for small spaces along the foundation or in a mixed border. Deer resistant and easy to grow. Tolerates partial shade and pruning well. Useful in containers.

- Hardiness Zone: 4-8
- Height: 4-5 Feet
- Spread: 3-4 Feet
- ***Partial Sun/Full Sun***

## Buxus microphylla var. japonica

### ***Green Mountain Boxwood***

Distinctly upright and conical with a broad base, this cultivar has a large range of landscape uses from specimen to hedging. Great green color has year-round staying power.

- Hardiness Zone: 4-8
- Height: 6-7 Feet
- Spread: 4-5 Feet
- ***Partial Sun/Full Sun***



GREEN MOUNTAIN BOXWOOD





IVORY HALO DOGWOOD

## Cornus alba

### *Ivory Halo Dogwood*

A more compact form of shrubby dogwood, this selection has beautiful cream-edged variegated foliage and stand-out bright red twigs that really enhance the winter landscape. Great for massing or for use in slightly smaller areas than 'Elegantissima'.

- Hardiness Zone: 3-7
- Height: 4-6 Feet
- Spread: 4-6 Feet
- **Full Sun**

## Dicentra formosa

### *Luxuriant Bleeding Heart*

Old fashioned perennial with clusters of weeping cherry-red flowers in summer. Attractive blue-grey foliage. Clump-forming plant. Prefers organic fertilizer. Deadhead regularly to extend blooming period. Prefers a moist, well drained soil in part shade. Tolerates full sun.

- Hardiness Zone: 3-8
- Height: 12-15 Inches
- Spread: 12-15 Inches
- **Partial Sun/Full Shade**



LUXURIANT BLEEDING HEART



OLD FASHIONED BLEEDING HEART

## Dicentra spectabilis

### *Old Fashioned Bleeding Heart*

Old-fashioned bleeding heart. Largest flowers of the group, pleasantly pink. Round growth habit brings the plant to 30" tall and wide. Blooms May through June. Potential mid-summer dormancy, yet will reflower with sufficient moisture and shade.

- Hardiness Zone: 3-8
- Height: 30-36 Inches
- Spread: 30-36 Inches
- **Partial Sun/Full Shade**

### *Alba White Bleeding Heart*

A perfect foil to its pink and white flower colored cousin, 'Alba' is a magnificent presence in the spring garden with fleshy, medium green, deeply cut foliage forming a considerable mound topped by strings of pure white bleeding heart flowers starting in late April and blooming into late May. Its size and its blooming power can leave you breathless, as this traditional garden plant still packs a powerful punch after all these years. Plant 'Alba' in semi-shaded to shaded areas and in moist, well-drained soils and feel free to combine them with spectabilis for a fantastic display of bloom!

- Hardiness Zone: 3-8
- Height: 24-30 Inches
- Spread: 24-30 Inches
- **Partial Sun/Full Shade**



ALBA WHITE BLEEDING HEART



## Forsythia

### **Show Off Forsythia**

It seems like almost all Forsythia is showy but 'Show Off®' stretches the bounds of showiness with a display of bloom that is an incredible blast of golden yellow color in April and early May on a plant that is denser, rounder and more controlled than 'Lynwood Gold' could ever think of being! With deep, dark green foliage it takes on a neater, more refined look in the summer months and, like most Forsythia, it's perfect for grouping to make a border planting, but it will do so in a much more confined area without growing you out of house and home!

- Hardiness Zone: 3-8
- Height: 3-5 Feet
- Spread: 5-6 Feet
- **Partial Sun/Full Sun**



SHOW OFF FORSYTHIA

## Hydrangea arborescens

### **Annabelle Smooth Hydrangea**

It's all about the flowers with this stunning performer. Mammoth blooms of up to one foot in diameter last from June to September and actually get larger as the season progresses on this old fashioned, durable favorite. 'Annabelle' was discovered in one lucky garden in Anna, Illinois, and for flower size, duration and durability this arborescens eclipses all others. In fact, the blooms are so colossal that the stems may not always be up to the task of supporting them so it's best to plant 'Annabelle' en masse for support or to add a support cage and to prune less vigorously to encourage stronger stems. 'Annabelle' thrives in almost any well-drained garden soil and will grow and flower well in full sun with plenty of moisture or partial shade. Make sure you cut some blooms for drying, too!

- Hardiness Zone: 3-8
- Height: 3-5 Feet
- Spread: 4-6 Feet
- **Partial Sun/Full Sun**



ANNABELLE SMOOTH HYDRANGEA

### **Invincibelle Ruby Smooth Hydrangea**

Red flowered smooth hydrangea! The dark burgundy red flower buds of Invincibelle® Ruby open to a two-toned combination of bright ruby red and silvery pink. The foliage is extra dark and stems are strong, making this new hydrangea a gem in any garden. It is a strong rebloomer that will be an excellent addition to any garden. Like other smooth hydrangeas, it flowers on new growth and so blooms every year without fail.

- Hardiness Zone: 3-8
- Height: 3-5 Feet
- Spread: 4-6 Feet
- **Partial Sun/Full Sun**



INVINCIBELLE RUBY SMOOTH HYDRANGEA





INVINCIBELLE GARNETTA SMOOTH HYDRANGEA

### ***Invincibelle Garnetta Smooth Hydrangea***

Lusciously full mophead pink flowers are only one of the qualities that make Invincibelle Garnetta hydrangea so special. It also boasts supportive, sturdy stems (no blooms laying on the ground here!), a usefully compact size, and the reblooming ability for months instead of mere weeks of flowers.

- Hardiness Zone: 3-8
- Height: 28-32 in
- Spread: 28-32 in
- **Partial Sun/Full Sun**

## **Hydrangea macrophylla**

### ***Endless Summer Bloomstruck Hydrangea***

Dense and compact with deep green foliage, this selection is a reblooming beauty with deep blue, mophead flowers starting in June and continuing all summer. Heavier blooming than Endless Summer® The Original. All summer color. Deep green foliage along with dark red stems add to its attraction. Easy to grow. Perfect for use as a specimen or in groups.

- Hardiness Zone: 4-8
- Height: 3-4 Feet
- Spread: 3-4 Feet
- **Partial Sun/Full Sun**

### ***Endless Summer The Original Hydrangea***

Here's a plant to shout about from the highest mountaintop! Endless Summer® 'The Original' will revolutionize the macrophylla Hydrangea market because, unlike all the others, it blooms reliably on new wood. That means glorious, beefy blue, pom-pom flowers every early July and lasting late into the summer even if last year's branches are winter damaged right to the ground. Now people in some of the coldest spots in the northeast can grow this summer charmer instead of just dreaming about it. Deep green foliage serves as a perfect backdrop to 4 to 6" diameter flowers that get even bluer in more acid soils. A great plant that will sell in endless numbers!!

- Hardiness Zone: 4-8
- Height: 5-6 Feet
- Spread: 5-6 Feet
- **Partial Sun/Full Sun**



ENDLESS SUMMER  
BLOOMSTRUCK HYDRANGEA



ENDLESS SUMMER THE ORIGINAL  
HYDRANGEA



GRANDIFLORA HYDRANGEA - TREE FORM

## **Hydrangea paniculata**

### ***Grandiflora Hydrangea - Tree Form***

Hydrangea paniculata 'Grandiflora' is loved by generations of gardeners and for good reason: in late summer it produces huge, conical trusses (up to 18" long) of double flowers that are rich creamy white and fade gradually to pink and then brown. It flowers on new growth, so late winter or early spring is the best time to prune the overall shape or to remove any stems damaged during the winter. PeeGee Hydrangea is one of the best varieties for cutting and for drying.

- Hardiness Zone: 4-8
- Height: 8-10 Feet
- Spread: 10-15 Feet
- **Partial Sun/Full Sun**



### ***Bobo Hardy Hydrangea***

This award-winning dwarf hydrangea will enchant the landscape with its celestial white flowers that turn pinkish in the fall. These cloudlike flowers lengthen as they grow and are supported by strong upright stems, making Bobo a perfect pick for tighter spaces in your border or foundation planting.

- Hardiness Zone: 3-8
- Height: 30-36 Inches
- Spread: 36-48 Inches
- ***Partial Sun/Full Sun***

### ***Pink Diamond Panicle Hydrangea***

12" long and 8" wide dense, pyramidal, cone-shaped panicles emerge white but mature to a rich pink at the ends of red-stemmed branches. Strong stems hold the huge flowers upright with no drooping. Flowers bloom from July through September. This is one of the most winter hardy of the hydrangeas, and thrives in urban conditions.

- Hardiness Zone: 3-8
- Height: 6-8 Feet
- Spread: 4-6 Feet
- ***Partial Sun/Full Shade***

### ***Strawberry Sundae Hydrangea***

Strawberry Sundae® is a delicious new compact hydrangea from the French breeder of Vanilla Strawberry® Jean Renault. Similar in many ways to Vanilla Strawberry® with one important exception, its smaller stature. Flowers emerge creamy white in mid summer, change to pink and finally to strawberry red. The flowers will remind you of a refreshing strawberry sundae ice cream treat on a hot summer afternoon. With its compact habit this hydrangea can add color to a small space garden or container and the fantastic flower color lasts well into fall. Excellent for fresh cut and dried flower arrangements.

- Hardiness Zone: 4-8
- Height: 4-5 Feet
- Spread: 3-4 Feet
- ***Full Sun***



BOBO HARDY HYDRANGEA



PINK DIAMOND PANICLE HYDRANGEA



STRAWBERRY SUNDAE HYDRANGEA

## **Paeonia**

### ***Duchesse de Nemours Peony***

Some plants are garden 'fly-by-nights', coming in like gangbusters only to be forgotten within a couple of years. Contrast that with 'Duchess de Nemours', a garden Peony that has stood the test of time in the garden for over 150 years and is still one of the best selections available today. It's hard to beat it when it comes into bloom above deep green foliage with fat, double, full, fantastic, fragrant pure white flowers with a touch of cream in the middle in early June. These regal blooms are perfect for cutting and the plant will grow perfectly in any sunny, moist, well-drained location.

- Hardiness Zone: 3-8
- Height: 24-30 Inches
- Spread: 24-30 Inches
- ***Full Sun***



DUCHESSE DE NEMOURS PEONY





KARL ROSENFIELD DOUBLE PEONY

#### ***Karl Rosenfield Double Peony***

A brilliant, semi-double flowered Peony with crimson petals, 'Karl Rosenfield' makes just the kind of old school statement that has made gardeners love Peonies for generations. 'Karl Rosenfield' just turned 100 years old and is still a hot variety that continues to enjoy unprecedented popularity. And why not with its signature late May to late June bloom atop strong stems and its classic colored petals surrounding a golden bomb of stamens? 'Karl Rosenfield' is one of the lowest maintenance perennials around...just plant in full sun and you are promised years and years of large, delightful flowers that butterflies adore and deer don't have a taste for. All Peonies love moist, well drained soil and transplant poorly once established in a location.

- Hardiness Zone: 3-8
- Height: 30-36 Inches
- Spread: 2-4 Feet
- **Full Sun**

#### ***Sarah Bernhardt Peony***

Captivating scent and huge flowers will have you screaming for more the first time you see this selection in bloom. 'Sarah Bernhardt' is tall growing with tightly grouped stems that each carry a big, round bulky bud by mid-May. Buds open in late May to huge, very double rose-pink flowers that are as fragrant as they are showy. Flowers are perfect for cutting to bring that incredible aroma inside and its deeply dissected foliage remains clean and deep green throughout the season. Place it in full sun or partial shade in moist, well-drained soil and be sure to provide support to the plant to keep those mammoth flowers upright and looking their best.

- Hardiness Zone: 3-9
- Height: 3-5 ft
- Spread: 18-24 in
- **Full Sun**



SARAH BERNHARDT PEONY

### ***Paeonia latifolia***

#### ***Coral Sunset Peony***

'Coral Sunset' has a beautiful cupped bloom of coral pink with yellow central stamens. The semi-double bloom in the spring. Beautiful planted as a focal point in the perennial border. This long-lived, trouble-free perennial will thrive in a moist well-drained, sunny location.

- Hardiness Zone: 3-8
- Height: 30-36 Inches
- Spread: 24-30 Inches
- **Full Sun**



CORAL SUNSET PEONY



## Physocarpus opulifolius

### **Amber Jubilee Ninebark**

Amber Jubilee was selected for its striking foliage in glowing tones of orange, yellow and gold. Rounded and dense in habit, this shrub, with its bold array of colors, will stand out in your garden border or make for an eye-catching hedge. Delicate white blooms are produced in spring, and fall foliage is highlighted with tones of red and purple, making this ninebark appealing over the entire season. Plant in full sun for best performance.

- Hardiness Zone: 2-8
- Height: 5-6 Feet
- Spread: 4-5 Feet
- **Full Sun**

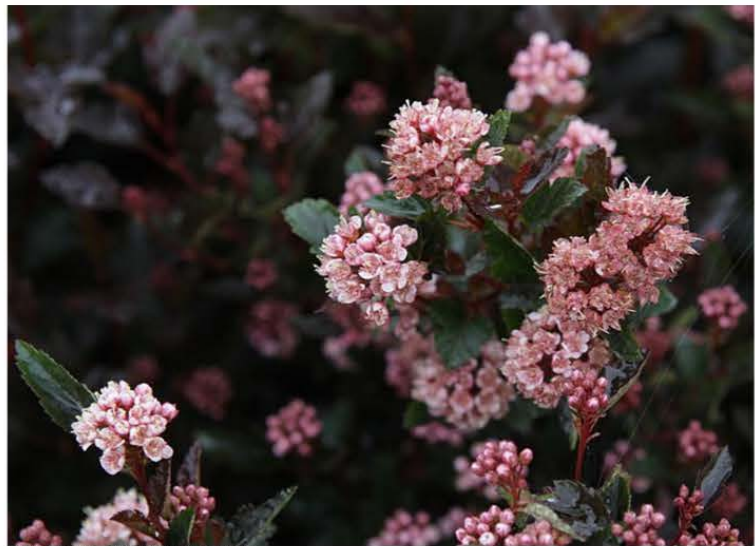
### **Little Devil Common Ninebark**

The genus of Physocarpus contains some of the easiest to grow shrubs you can put in your landscape. They are nearly carefree, with colorful foliage, great bloom and tolerance for almost any poor, rocky, dry soil you can send their way. Unfortunately, they have always been big plants that take up a lot of room, room that is, many times, hard to find in smaller suburban landscapes. Little Devil™ changes all of that with a tight, rounded, compact form and size that gives you all those great Physocarpus traits in miniature. Little Devil™ loses none of the hardiness of its bigger relatives and possibly even enhances its colorful foliage trait with dark red to maroon foliage that holds its great hue spring through fall. It is also a strong bloomer small pink to white blooms that arrange themselves in small, circular domes of color along its many stems in late May through mid June. Grow Little Devil™ in a sunny location with well drained soil and get ready to enjoy the show, even in small landscape spots!

- Hardiness Zone: 3-8
- Height: 3-4 Feet
- Spread: 3-4 Feet
- **Partial Sun/Full Sun**



AMBER JUBILEE NINEBARK



LITTLE DEVIL COMMON NINEBARK

## Picea glauca 'Conica'

### **Dwarf Alberta Spruce**

A compact, pyramidal spruce that is very slow-growing. It is widely used in the landscape because of its low maintenance, slow growth habit and rugged dependability.

- Hardiness Zone: 3-8
- Height: 6-8 Feet
- Spread: 3-4 Feet
- **Partial Sun/Full Sun**



DWARF ALBERTA SPRUCE





HOOPLA RHODODENDRON

## Rhododendron

### ***Hoopla Rhododendron***

Bred at the University of CT to commemorate its basketball prowess, this extremely cold hardy selection features huge trusses of salmon-pink bloom with prominent orange-yellow throats. Profuse blooming, it forms a full, compact plant in the landscape. Huge amounts of spring bloom. Outstanding color combination with salmon pink flowers color along with orange-yellow flower throats. Dense, round, full form that is perfect for larger foundation planting or grouped to form a semi-shade border planting.

- Hardiness Zone: 4-9
- Height: 5-6 ft
- Spread: 5-6 ft
- **Partial Sun**

### ***April Snow Rhododendron***

A superb PJM hybrid with dense, upright form, small, medium green foliage, and clouds of pure white flowers in late April. Bright yellowish green stems and bronze foliage tinge in fall and winter give this plant some serious winter interest!

- Hardiness Zone: 4-9
- Height: 5-6 ft
- Spread: 5-6 ft
- **Partial Sun**

### ***Olga Mezitt Rhododendron***

Clear, deep pink blossoms appear in abundance in early to mid-May just after PJM. A vigorous plant, it grows wide and upright with shiny, bright green foliage that turns a beautiful reddish color in fall.

- Hardiness Zone: 4-8
- Height: 5-6 Feet
- Spread: 4-5 Feet
- **Full Shade/Partial Sun**



APRIL SNOW RHODODENDRON



DOUBLE KNOCK OUT RED ROSE - TREE FORM

## Rosa

### ***Double Knock Out Red Rose - Tree Form***

This relative of the now famous 'Knock Out®' is more than a "me too" plant put on the market to take advantage of a famous great selling previous plant... much more! More compact than its famous sibling, 'Double Knock Out®' features a dense, rounded form, outstanding, disease resistant, deep gray-green foliage and loads of deep pinkish-red flowers with multiple rows of petals as a compared to 'Knock Out®'. It's a great easy care rose that will make the most rank amateur in the garden look like a pro, because it is so easy to grow, so floriferous and so disease resistant. Plant 'Double Knock Out®' in groups, or in a container in a sunny spot and enjoy the landscape magic!

- Hardiness Zone: 4-8
- Height: 2-3 Feet
- Spread: 3-4 Feet
- **Full Sun**



OLGA MEZITT RHODODENDRON



### **Double Pink Knock Out Rose (Shrub & Tree Form)**

(Northern Hardy) Like its relative "Double Knock Out®", 'Double Pink Knock Out®' will offer you a rose that is so carefree in your garden that it will remind you of the best flowering shrub you can think of with a hundred times the color!! 'Double Pink Knockout' is a prolific bloomer with loads of flower buds rising above its dense, compact form and deep green foliage. From May to October and opening to the sweetest double hot pink, 3" diameter flowers you'll ever see! It's a dream garden plant for your landscape because of the color but also because it is so carefree, so disease resistant that you'll want to mass them in any sunny spot you can find so you can fill your yard with season long color!!

- Hardiness Zone: 4-8
- Height: 3-4 Feet
- Spread: 3-4 Feet
- **Full Sun**

### **High Voltage Shrub Rose**

Brilliant clusters of shockingly yellow blossoms are held up high on sturdy canes. Incredibly clean foliage compliments the fragrant, huge double blooms. This hardy shrub rose adds a sunny shock of color to any sunny landscape or container. Upright, vase-shaped habit will stand up in the back of the border or stand out as an accent. Comes with the renowned Easy Elegance Rose repeat blooming and disease resistance.

- Hardiness Zone: 4-7
- Height: 3-5 Feet
- Spread: 2-4 Feet
- **Full Sun**

### **Kashmir Rose**

Forget those old Hybrid Tea Roses... why even deal with them when you have an outstanding Easy Elegance Rose that gives you stunning Hybrid Tea-like flowers on a tough, hardy plant that shrugs off disease problems with the same ease that it blooms. Big deep red buds rise above deep green, disease resistant foliage and open to fat, heavily petalled, 3" diameter deep, almost velvety red flowers from May until frost. The flowers are an absolute wonder to behold and you'll have chance to behold them for months with this plant's desire to keep the color coming. 'Kashmir' blooms are perfect for bringing inside to admire and that may be the most work you'll have to perform on this easy going plant that can easily be one of the most beautiful rewarding flowering shrubs you can grow in your yard. That's right... a rose that's as easy to grow as a flowering shrub!

- Hardiness Zone: 4-8
- Height: 3-4 Feet
- Spread: 3-4 Feet
- **Full Sun**



DOUBLE PINK KNOCK OUT ROSE



DOUBLE PINK KNOCK OUT ROSE - TREE FORM



HIGH VOLTAGE SHRUB ROSE



KASHMIR ROSE





ICEBERG ALLEY SAGELEAF WILLOW

## Salix Candida

### ***Iceberg Alley Sageleaf Willow***

Iceberg Alley™, a native plant discovered by the Memorial University of Newfoundland and Labrador Botanical Garden. Powdery, silver foliage of this small shrub is a great addition to the landscape, adding texture and contrast when combined with other shrubs. Forming a rounded shrub and does not overtake the landscape, reaching a height and spread of about 5' (a bit shorter in very cold areas and a bit taller in warmer zones). It blooms in spring with silver catkins, red stamens and nectar for pollinators. Tolerant of moist soils and a good choice for rain gardens. Grows best in full sun and tolerates pruning beautifully. Consider cutting the stems in early spring for the decorative catkins.

- Hardiness Zone: 2-6
- Height: 3-6 ft
- Spread: 3-6 ft
- **Partial Sun/Full Sun**



PUSSY WILLOW

## Salix discolor

### ***Pussy Willow***

While this plant can be big and aggressive growing, there is no more appreciated landscape plant by humans, birds, and butterflies. Everybody knows this American Beauties classic provides a raft of flower catkins that every spring craving gardener loves to cut and admire but these same catkins provide early season nectar for native bees while some of our area's most prized birds love to feed on its buds. Pussy Willow will tolerate most any soil, even very moist or wet ones, and grows large enough to provide a huge amount of cover for birds and small mammals while its leaves are the food source for many of the most colorful butterflies our area has to offer.

- Hardiness Zone: 3-8
- Height: 20-25 Feet
- Spread: 18-20 Feet
- **Full Sun**



HAKARO NISHIKI JAPANESE WILLOW

## Salix integra

### ***Hakaro Nishiki Japanese Willow***

Outstanding tri-color variegation of white, green and pink make this more compact growing pussy willow an interesting landscape addition. Easy to grow, prefers moist soil.

- Hardiness Zone: 4-8
- Height: 6-8 Feet
- Spread: 6-8 Feet
- **Partial Sun/Full Sun**



## Spiraea japonica

### ***Little Princess Spiraea***

Dense and mound forming, this selection puts on an impressive display of bright pink flowers from late June through July. Easy care and vigorous growing.

- Hardiness Zone: 4-8
- Height: 2-3 Feet
- Spread: 4-5 Feet
- **Full Sun**

### ***Magic Carpet Spiraea***

A real improvement in gold foliage Spireas, this selection keeps its gold color throughout the summer and blooms heavily from mid-June through July with pink, flat flower heads. Nice, compact form makes it easy to use anywhere in the landscape.

- Hardiness Zone: 4-8
- Height: 2-3 Feet
- Spread: 4-5 Feet
- **Full Sun**



LITTLE PRINCESS SPIRAEA

## Spiraea van houttei

### ***Renaissance Spiraea***

Everyone is familiar with x van houttei since it has been a staple of the spring landscape for decades, but 'Renaissance' is better because it displays a much stronger resistance to diseases. You'll be hard pressed to find one single difference between the two plants except 'Renaissance' is much more carefree and much more able to deliver on the promise of being a great landscape plant! So, enjoy the same fountain form and incredible bloom that resembles a snowstorm only in late May and June, and use generously in the garden for its great looks when planted alone or in groups to form an elegant border planting.

- Hardiness Zone: 3-8
- Height: 5-6 Feet
- Spread: 6-7 Feet
- **Partial Sun/Full Sun**



MAGIC CARPET SPIRAEA



RENAISSANCE SPIRAEA

## Syringa patula

### ***Miss Kim Lilac***

Showy, 3" long panicles of fragrant purple flowers grace this dense, full shrub in mid-May. Leaves are deep green and somewhat glossy and tend to keep clean throughout the growing season.

- Hardiness Zone: 3-8
- Height: 5-6 Feet
- Spread: 6-7 Feet
- **Partial Sun/Full Sun**



MISS KIM LILAC





IVORY SILK TREE LILAC



FIALA REMEMBRANCE LILAC

## Syringa reticulata

### ***Ivory Silk Tree Lilac***

Trouble free and spectacular, this plant will be a blooming masterpiece in any landscape. Round, dense form is covered with creamy white, 6-12" long panicles of flowers in June. A real beauty!

- Hardiness Zone: 3-8
- Height: 20-25 Feet
- Spread: 10-15 Feet
- **Partial Sun/Full Sun**

## Syringa vulgaris

### ***Fiala Remembrance Lilac***

Vigorous, upright growing deciduous shrub with dark, bluish-green foliage and a profusion of 6-12" long, very fragrant, double white flower spikes in spring. One of the most fragrant shrubs for any landscape, perfect for grouping to form a large shrub border planting. Easy to grow and very hardy, is perfect for cutting/bouquet use.

- Hardiness Zone: 2-8
- Height: 7-9 ft
- Spread: 6-8 ft
- **Partial Sun/Full Sun**

### ***Beauty of Moscow Krasavitsa Moskvyy Lilac***

Krasavitsa Moskvyy translates into Beauty of Moscow, and it is easy to see why. Pale pink buds give way to a mass of double white flowers with a slight pink blush in April and May, contrasted by dark green leaves. This beauty's fragrance is sublime, making it the perfect candidate to stand out in your landscape.

- Hardiness Zone: 3-8
- Height: 12-15 Feet
- Spread: 8-12 Feet
- **Full Sun**

### ***President Poincare French Lilac***

Presidential in stature, 'President Poincare' stands upright hoisting profuse magenta-red flowers. If plants are grown near a window or walkway, you will be able to enjoy the lovely fragrance every time you're in the vicinity!

- Hardiness Zone: 4-8
- Height: 9-11 ft
- Spread: 9-11 ft
- **Partial Shade**

### ***Common Lilac***

Vigorous, upright growing deciduous shrub with dark, bluish-green foliage and loads of 6-12" long, very fragrant purple flower spikes in early May. One of the most fragrant shrubs for any landscape, it's perfect for grouping in larger shrub border areas. Easy to grow & very hardy. The fragrant flower is perfect for cutting.

- Hardiness Zone: 3-8
- Height: 12-15 Feet
- Spread: 8-12 Feet
- **Full Sun**



BEAUTY OF MOSCOW KRASVITSA MOSKVY LILAC



PRESIDENT POINCARE FRENCH LILAC



COMMON LILAC



## Syringa X hyacinthiflora

### **Mount Baker Lilac**

The pure white bloom on this precocious, early blooming Lilac will amaze you while its ability to bloom heavily at an early age will make you jump for joy. Lots of the old fashioned vulgaris and French Hybrid types seem like they take forever to bloom in the landscape or, when they do, they seem like they are rationing flowers. No such problem with 'Mount Baker'! It blooms early and heavily with 6" stem ending cones of small, pure white, single flowers that think nothing of filling the whole yard with their sweet fragrance when they burst into bloom in early May. Even better, its tight, dense, full form and deep green foliage make it a great looking presence in any border planting or large foundation area when it is not in bloom. Plant 'Mount Baker' in full to half day sun and in moist, well drained soil for outstanding growth and bloom that you can depend on and cherish year after year.

- Hardiness Zone: 4-8
- Height: 12-15 Feet
- Spread: 8-12 Feet
- **Partial Sun/Full Sun**

### **Scentara Double Blue Lilac**

There are about 15 different species of lilacs found in nature, and Syringa hyacinthiflora is the queen of them all when it comes to fragrance. And that's what makes Scentara® Double Blue the most fragrant Proven Winners lilac yet! The cool purple blooms take on a blue tone in the spring sunshine, each one full of petals for a delicate seashell-like effect. This very heavy bloomer exhibits excellent disease resistant and a handsome, appealing shape that will look right at home in your landscape.

- Hardiness Zone: 2-8
- Height: 6-8 Feet
- Spread: 6-8 Feet
- **Full Sun**

### **Pocahontas Lilac**

This vigorous growing selection is the harbinger of the lilac blooming season as deep purple buds open in early May to reveal masses of rich violet flower panicles that fragrantly decorate the landscape throughout May with their color and staying power. Rich green foliage and upright, multi-stem form provides great substance for border groupings or specimen use.

- Hardiness Zone: 3-8
- Height: 4-7 Feet
- Spread: 4-6 Feet
- **Full Sun**



MOUNT BAKER LILAC



SCENTARA DOUBLE BLUE LILAC



POCAHONTAS LILAC





BLOOMERANG DARK PURPLE LILAC

## Syringa X Bloomerang

### ***Bloomerang Dark Purple Lilac (Shrub & Tree Form)***

It's the next big thing for Bloomerang! Dark Purple is a bigger plant with larger, more rounded inflorescences. It's very showy in spring, and continues to amaze with fragrant blooms from mid-summer to frost. This is a strong grower, and will add beauty and fragrance to gardens from spring to fall. Perfect as a stand alone specimen or stunning when grouped to form a border planting, this selection is a butterfly magnet and is deer resistant. A light trim directly after spring bloom will greatly enhance this plant's summer and fall blooming prowess.

- Hardiness Zone: 3-8
- Height: 4-7 Feet
- Spread: 4-6 Feet
- **Full Sun**

## Thuja occidentalis

### ***North Pole Arborvitae***

North Pole® is an easy to grow evergreen that will thrive in your landscape through thick or thin. Actually, thick or thin may be the perfect analogy for this plant. Its thin form will make you sit up and take notice as it stays thinner than 'Emerald Green', one of the most popular Arborvitae sold today. While it stays thin and narrow, its tightly held, fan-like foliage covers its narrow form thickly to produce a plant that impenetrable to vision making it a wonderful hedge plant when planted en masse. Its form and ease of growth also make it a perfect single specimen plant for any narrow space in the sunny or partially sunny landscape. North Pole®, unlike other Arborvitae, is also masterful about retaining its dark, deep green foliage color even in the harshest of winters, a claim among other like Thuja that is often made but less often truly borne out. North Pole® prefers moist, well drained soil but will be tolerant of drier solid once established.

- Hardiness Zone: 3-8
- Height: 10-15 Feet
- Spread: 3-5 Feet
- **Partial Sun/Full Sun**



BLOOMERANG DARK PURPLE LILAC - TREE FORM



NORTH POLE ARBORVITAE

## Viburnum opulus

### ***European Snowball Viburnum***

An old landscape favorite that literally explodes with 2.5-3" snowballs in mid-May. Eye-catching and a vigorous grower, this plant works well as a single accent or nice border grouping.

- Hardiness Zone: 3-8
- Height: 10-12 Feet
- Spread: 10-12 Feet
- **Partial Sun/Full Sun**



EUROPEAN SNOWBALL VIBURNUM